

YONE

PAT.P

COOL FIGHTER



Attack and Protect ! For the Fire Fighter's Safety !



Combination
(Straight Stream + *Water Shield*)

Performance

YONE Corporation have developed a revolutionary type nozzles with an effective fire suppressible functions and *Water Shield* for fire fighters. This nozzle is most effective for ensuring the ultimate protection of the fire fighters while fighting fires. The COOL FIGHTER protects the Fire fighters from formidable radiant heat and smoke. This nozzle is easy to operate and lightweight.



Model: NV-40CFP



Model: NV-40CF

Operation

Fog



Straight

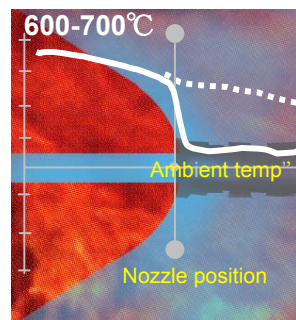


Combination (Straight Stream + *Water Shield*)



Cool Fighter is basically operated in the same way as conventional nozzles. by turning bumper of nozzle changes in flow patterns are achieved from fog to straight or combination (straight plus *Water Shield*.)

Performance



Tests show combination stream can effectively reduce temperature at the edge of flame from 600-700°C (1110 -1290F) to surrounding temperature. The *Water Shield* effectively lowers tempera -ture and shuts out smoke at the same time.

Advantages

1. Simply by turning bumper or cover of the nozzle, water pattern flow changes easily from fog to straight or combination stream (straight + **Water Shield**.)
2. With dual control function water flow is determined at 0, 200, 360, or 550 l/min. (at 7 bar) and flow patterns can be selected independently. (Model: NV-40CFP)
3. Desired density of **Water Shield** is obtained by dialing and presetting 1 to 9 on the ring of water shield dial to cope with the situation.
4. A strainer is fitted at the inlet of the nozzle to keep out dirt and debris.
5. Flushing function is built in for cleaning nozzle.
6. Standard foam nozzles Attachment can be connected.

WaterShield

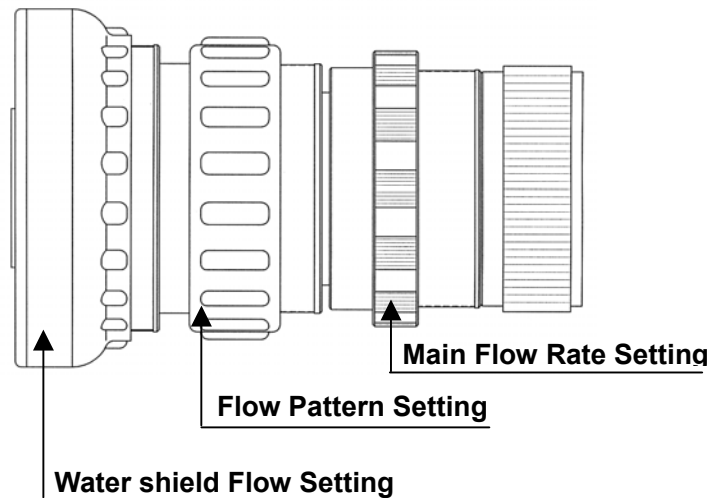
Water Shield Discharge Slit :
Density of **Water Shield** is obtained by dialing and presetting 1 to 9 of the Water shield.



While operation at Water Shield position, no increase of water is required.
This helps the operator from sudden shock caused by reaction of water increase.

Flow Setting

Cool Fighter is basically operated in the same way as conventional nozzles. By turning bumper of nozzle changes in flow rate and patterns are achieved from fog to straight or combination

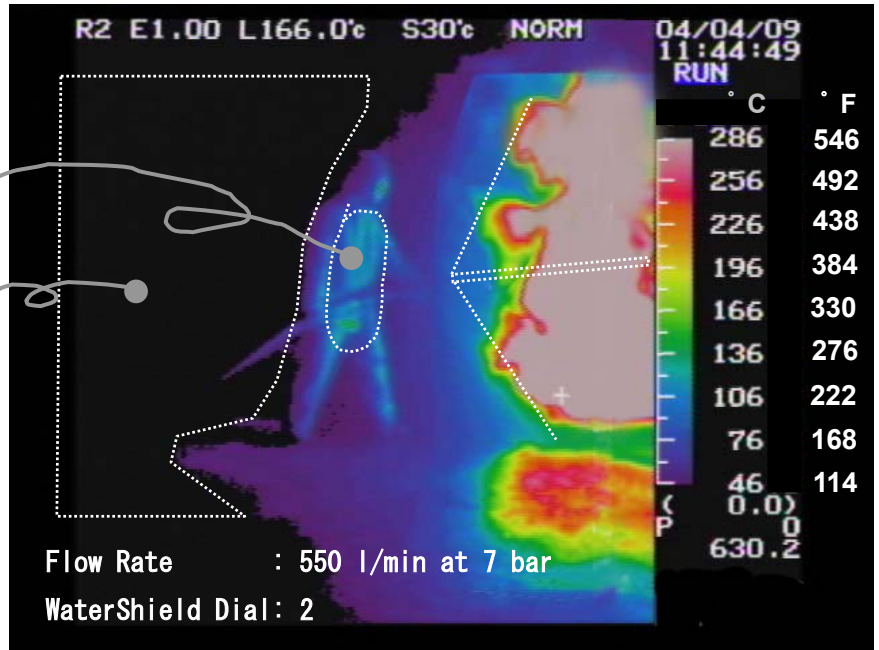


WaterShield Effectiveness Test by Thermography

The test with a Infrared Thermography shows the effectiveness of Water shield. It effectively lowers the temperature and shut out the smoke

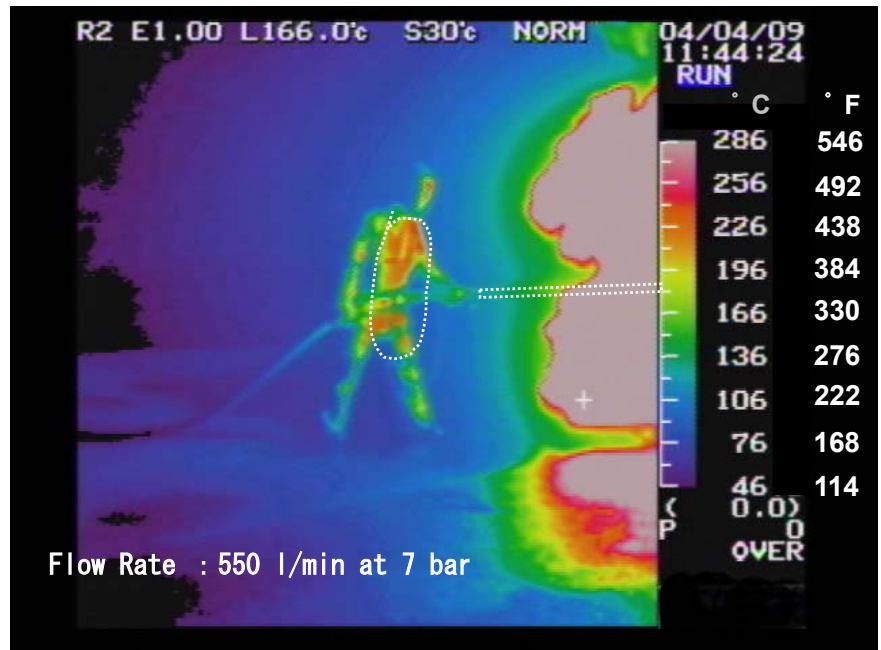
Combination Pattern : Watershield + Straight Stream Discharge

- 6 seconds after discharge, the surface temperature of fire fighter was brought down to 100°C (210° F) .
- The ambient temperature was kept cool while discharge.



Straight Stream discharge only

With a discharge of straight stream only the surface temperature of the fire fighter exceeded 280 °C (540 ° F) .



Test : Apr. 9 2004

At Test facility of YONE Corporation

Specifications

Model	NV-40CFP	NV-40CF	NV-25CFP	NV-25CF
Style	Ball Valve with grip	Tip	Ball Valve with grip	Tip
Material	light weight anodized aluminum			
Water Flow Rate	0, 200, 360, and 550 l/min. (at 7 bar)		0, 115, 230 and 360 l/min. (at 7 bar)	
Nozzle Connection	1.5"NH / DIN 3" / BS336 2.5"	1.5" NH	1"NH	1" NH
Test Pressure	15 Bar			
Length & Weight:	270mm / 2.2 kg	144 mm / 1.1 kg	197mm / 1.3 kg	108mm / 0.7 kg

Fight Fires without Fear / COOL FIGHTER' s [Water Shield](#) is Here !

 CORPORATION

Head office 23, NISHINAKAICYO, NISHINOKYO
NAKAKYOU-KU, KYOTO 604 JAPAN
TEL +81(0) 75 821-1185
FAX +81(0)75 801-2263

Tokyo office 1-14-7 KIKUKAWA, SUMIDA-KU
TOKYO 130 JAPAN
TEL +81(0)3 3634-6611
FAX +81(0)3 3632-0246

www.yone-co.co.jp