

## Specification

### SONAR

Name	Model	PROEYE751-SNR-7	PROEYE751-SNR-MEGA
Depth Capability	Side/Down Imaging	30m(98ft)	38m(124ft)
Power Output	RMS	500 Watts	1kW
	Peak to Peak	4000Watts	
Operating Frequency		1.2MHz/800kHz(751-SNR-MEGA only), 455kHz, 200kHz, & 83kHz	
Area of Coverage	Side / Down Imaging	86°(2)@-10db in 455kHz (180°Coverage) /55°(2)10db in 800khz • Both side ....76m (60m) / Single side...38m(30m)	
	2D SONAR Imaging	60°@-10db in 83kHz 20°@-10db in 200kHz	
Target Separation		2.1/2 (63.5mm)	
Power Requirement		10-20V	
LCD Matrix		7" TFT MONITOR 800H×480V 256 Color	9" TFT MONITOR 800H×480V 65000 Color
Current Draw		800 mA 【DC12V】	1A 【DC12V】
IPX Rating		IP67 Waterproof	

Name	Model	PROEYE751-SNR-7/MEGA
Color Image Sensor (Camera)	Pick-up Element	1/4" Color Interline Transfer CCD Image Sensor
	Total Number of Pixels	NTSC : 811 (H) ×507 (V) PAL : 795 (H) ×595 (V)
	Video Output	1 Vp-p 75 Ω(Unbalanced)
	Resolution	450 TV Line
	Minimum Illumination	0.4 Lux F2.0 (G3.8)
	White Balance	Automatic
	Lens	Angular View 51(H)deg*40(V) degrees
	Viewing distance;	15cm to 6 m in total darkness
Illumination	Bulb	LED Bulb, 12 p.c.s
	Minimum Life	1000 Hours
	Power	3.6V
Articulation	Actuator	DC 12V Geared Motor
	Total Articulation Angle	180 degrees
Total Viewing Area of Camera		231 degrees
Cable	Style	Straight Cable
	Length	10m
	Connector	12 Pin / Water proof : Underwater 50m
Housing	Water proof	Underwater 50m
	Dimension	Camera Head Housing : 35 (H) ×36 (V) mm



CORPORATION

HEAD OFFICE 23, NISHINAKAI-CHO, NISHINOKYO  
NAKAGYO-KU, KYOTO 604-8441 JAPAN  
TEL KYOTO +81 75 821 1185  
FAX KYOTO +81 75 801 2263

TOKYO BRANCH 1-14-7 KIKUKAWA, SUMIDA-KU  
TOKYO 130-0024 JAPAN  
TEL TOKYO +81 3 3634 6611  
FAX TOKYO +81 3 3632 0246

URL: <http://www.yone-co.co.jp>

2018.2.E

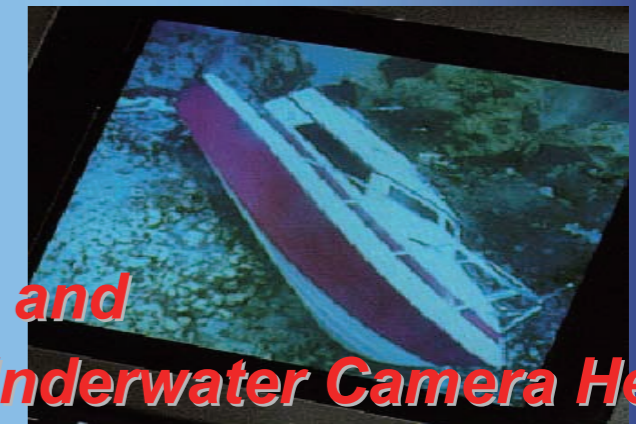


Multi-Purpose Search & Rescue Camera

# PROEYE 751-SNR

PAT. A

# SONAR Plus™



**Search out by SONAR and  
Pinpoint with the Underwater Camera Head!  
Great result in dark and cloudy waters!**



With the unique PROEYE 751-SNR SONAR Plus, operators can see sonar images from the SONAR System and real-life images captured by the Underwater Camera Head at the same time.

The forefront technologies built into SONAR provide clear images even when searching the dark or cloudy waters of lakes and rivers. The system is designed compactly for optional use for various types of search & rescue operations.



PROEYE 751-SNR  
SONAR Plus

**NEW MEGA SERIES LAUNCHED**

**9" WIDE MONITOR  
WITH 1.2 MHz  
SONAR ON BOARD!!**

Please visit our web-site, [www.yone-co.co.jp](http://www.yone-co.co.jp)

YONE CORPORATION



# PROEYE 751-SNR

751-SNR Series **MEGA** model Launched!  
9" Wide Monitor W/1.2 MHz MEGA System  
on board Shaper Sonar Image!

# SONAR Plus™

\*SONAR: Sound navigation ranging

## Outline

### Search out by SONAR and Pinpoint by Underwater Camera Head!

- With help from the Side Imaging and Down Imaging technologies of this SONAR system, you will be able to rapidly locate and visualize targets like sunken boats, vehicles and accident victims from the side of your boat. Conventional sonars usually take considerable time, even hours to locate targets. With the Side Imaging system incorporated in 751-SNR



- SONAR system, you might be able to find your target in minutes.
- Once you find the target, lower the Underwater Camera Head directly from the sensor unit to pinpoint and confirm the location.

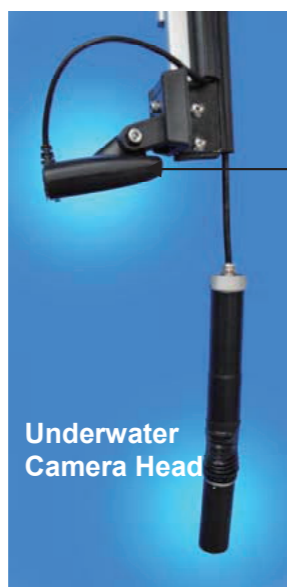
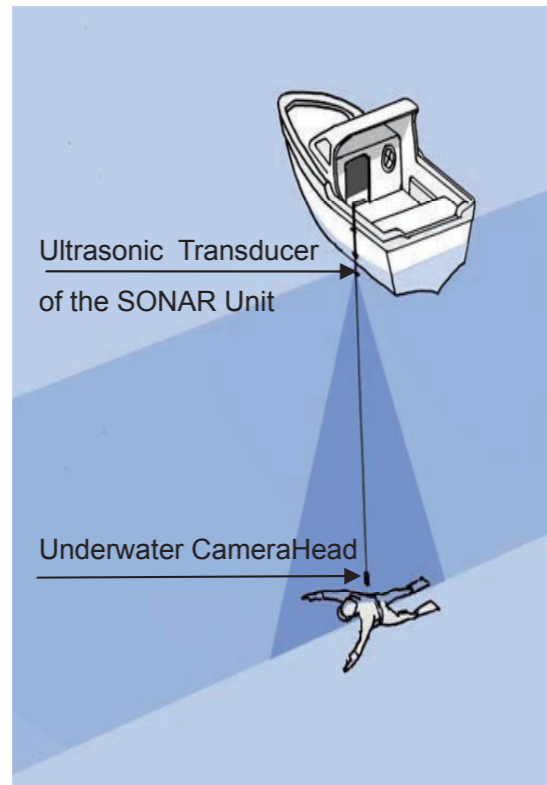


- The GPS installed in the system displays the exact location of the point.



- Images can be recorded onto the SD card.

SD Card Slot



#### Clamp

Use this clamp to fix the sensor to the side of the boat.

Ultrasonic Transducer of SONAR

#### SONAR Image Display

7" or 9" Monitor for a clear display of the SONAR image.  
(\*Example Picture)

#### Underwater Camera Display

The 7" LCD Monitor displays the captured image from the Underwater Camera Head. (\*Example Picture)

#### GPS Antenna

#### Underwater Camera Control panel

Remotely control the illumination and the 180 degree articulation.



#### System Box

#### Sensor Unit

#### Ultrasonic Transducer

The SONAR system sends its sound wave signals from this transducer.

#### Camera Head Cable

10m straight cable length  
If needed, 20m, 30m and 50m  
Extension Cables can be connected with the waterproof connector.

#### Underwater Camera Head

Designed for underwater use at depths up to 50m with 180 degree remote control articulation.

#### Illumination

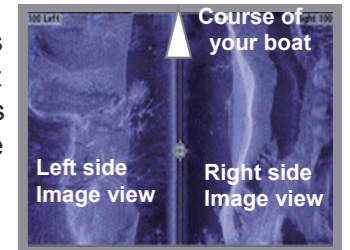
The LED 12 bulb provides powerful illumination.

## Search Operation

- Step.1 Searching with the SONAR's Side Image viewing**

The Side Image viewing sonar casts two slim beam, one on each side of the boat, and a larger 180° beam underneath. The sonar range covers a distance of up to 38m on each side of your vessel. This gives you a 76m range of view from your location.

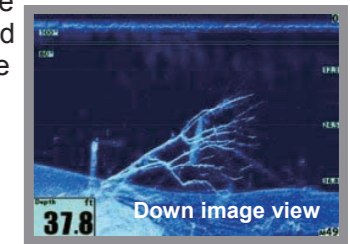
Clearly visualize the objects in the water and pinpoint their whereabouts in relations to your boat including the most object, your target.



SONAR Monitor Display

- Step.2 Locating with the SONAR's Down Image viewing**

To better see target, move the boat above the target and look down in the Down Image viewing mode.



SONAR Monitor Display

- Step.3 Pinpointing with the Underwater CameraHead**

Lower the Underwater CameraHead to capture an actual image of the target on the Underwater Camera Monitor Display.

- Step.4 Recording the position with Marine GPS**

Check and record the latitude and longitude of the location indicated on the display.

